



ANNUAL REPORT

2020

EXECUTIVE DIRECTOR'S MESSAGE

There is no need to gloss over the challenges that everyone faced during the year 2020. The global pandemic of Coronavirus disrupted everyone's personal and professional lives in multiple and intersecting ways.

In early March 2020, it became apparent that for the foreseeable future, all of the work we had planned would need to be approached from a physically disconnected space. This was no small challenge for an organization that facilitates work through connection.

With support and patience from our members, partners, funders, and more we were able to complete 2020 with a new sense of and appreciation for the connections we built prior to and during the pandemic. In many ways, as we worked through the year we strengthened partnerships, developed new strategies, made new connections.

If we had 2020 to do all over again, of course, we would request that we do so without any impact from coronavirus outbreaks. At the same time we wouldn't want to move through 2020 without anyone else but all of you.

With 2020 in our rearview mirror, we still can report a successful year of collaborative conservation and building resilience in Washington State. We hope to see you in 2021 and look forward to deepening our connections for better conservation outcomes.

OUR BOARD MEMBERS

Reese Lolley, President

The Nature Conservancy

Anna Lael, Director

Kittitas County Conservation District

Phil Rigdon, Director

Yakama Nation

Mike Tobin, Alt- Director

North Yakima Conservation District

Tom Coleman, Secretary/Treasurer

Rabbitbrush Ranch LLC

John "Ken" Tolonen, Director

Master Gardeners, Yakima

Terry Lawhead, Director

Brady Kent, Alt- Director

Yakama Nation



OUR PARTNERS/CONTRIBUTORS

- Ashland Fire & Rescue
- Benson Farms
- Benton Conservation District
- Blue Mountain Shared Stewardship Collaborative
- Boise Fire Department
- Bonneville Power Administration
- Bureau of Land Management(BLM)
- CAFE
- Cascadia Conservation District
- Center of Natural Lands Management
- Chelan County Dept of Natural Resources
- Chelan County Emergency Management
- Chelan County Fire District 1 & District 3
- Chelan PUD
- Chelan-Douglas Health District
- Chelan-Douglas Land Trust
- Chris Martin
- Chumstick Wildfire Stewardship Coalition(CWSC)
- City of Leavenworth
- City of Roslyn
- Cle Elum Fire Department
- Cle Elum Volunteer Fire Department
- Commission for Hispanic Affairs
- Community Foundation of NCW
- Congresswoman Kim Shrier's Office
- WA Department of Ecology, Air Quality Program
- Douglas County Fire District 1
- Federal Emergency Management Agency (FEMA)
- Fire Adapted Methow Valley
- Confederated Tribes of Colville Reservation, Air Quality Division
- Fire Learning Network (FLN)
- Flowery Trails Community Association
- Forest Ridge Wildfire Coalition
- Foster Creek Conservation District
- Four Mound/Spokane Co Fire District 5
- Grant County Fire District 13
- Grindstone Environmental
- Join Base Lewis-McChord
- King County Conservation District
- Kittitas Conservation Trust
- Kittitas County Conservation District
- Kittitas County Fire District 1 & District 4, 6, 7
- Kittitas Fire Adapted Communities Coalition
- Lake Wenatchee Fire & Rescue
- Lake Wenatchee Fire Adapted Communities
- Latino Community Fund
- Leavenworth Chamber of Commerce
- Leavenworth City Council
- Lummi Island Fire District
- Manson Fire District
- Mid-Columbia Fisheries Enhancement Group
- Mt Adams Resources Stewards (MARS)
- National Fire Adapted Communities Learning Network
- National Park Service
- NE Wahsington Forestry Coalition
- North Central WA Forest Health Collaborative
- North Central WA Economic & Development District
- North Yakima Conservation District
- Nuestra CASA
- NW Clean Air Agency
- NWFIC-Lauren Maloney
- Ochoco NF
- Okanogan Conservation District
- Okanogan County Long Term Recovery
- OSU Extension-Chris Schatzenschneider
- Pacific Education Institute
- Parque Padrinos
- Rivercomm 911
- Roslyn Fire Department
- Shachamama
- San Juan Islands Conservation District
- Seattle City Light
- Skagit Conservation District
- Southern Oregon Forest Health Collaborative
- Sunnyside Fire District
- Sustainable Northwest
- Tapash Sustainable Forest Collaborative
- Team Naturaleza
- Telemundo Yakima/Tri Cities
- The Methow Conservancy
- The Nature Conservancy (TNC)
- The Watershed Research & Training Center (WRTC)
- Umatilla NF
- United States Forest Service (USFS)
- University of Washington
- Upper Valley Columbia Health
- US Army
- US Department of Agriculture
- US Fish & Wildlife Service (USFWS)
- UW Climate Impacts Group
- WA Conservation Commission
- WA Department of Commerce
- WA Department of Ecology
- WA Department of Fish & Wildlife (WDFW)
- WA Department of Natural Resources (DNR)
- WA Prescribed Fire Council
- WA State Conservation Commission
- WA State Recreation & Conservation
- WASCLA
- Washington Department of Health
- Washington Emergency Management Division
- Whatcom Conservation District
- Whatcom County Fire District #11
- Wildfire Advisory Committee
- Wildland Fire Advisory Committee
- Yakama Nation
- Yakama Nation & Fisheries Programs
- Yakima Chamber of Commerce
- Yakima Greenway Land Trust
- Yakima Hispanic Chamber
- Yakima Valley Community Foundation
- Yakima Valley Fire Adapted Communities (YVFAC)
- TELE, RVCC, NRCS
- NOAA, NWFIC

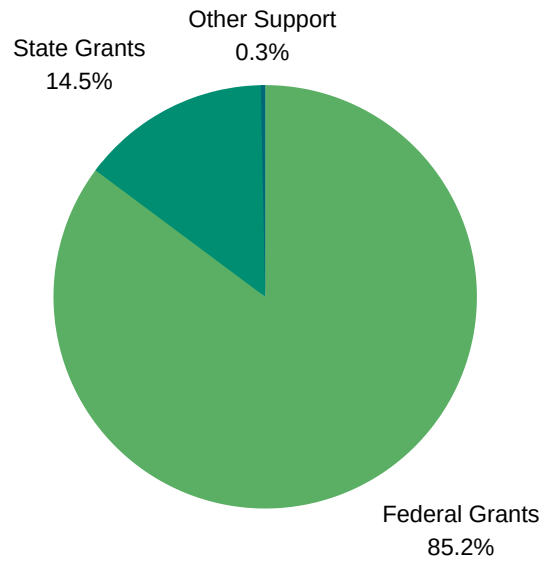
OUR PERFORMANCE

Revenue

Financial information ending 12/31/2020

2.1
Million

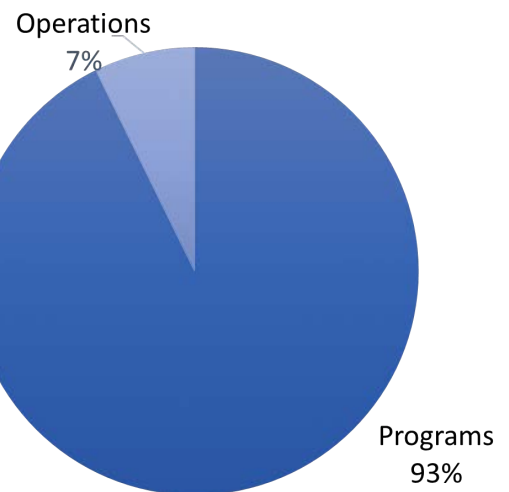
TOTAL
REVENUE



Expenditures

1.9
Million

PROGRAM
EXPENSES



152
Thousands

OPERATING
EXPENSES



OUR TEAM

The Coronavirus pandemic kept us from in-person meetings. Zoom meetings came in handy for maintaining connections, as the staff smiles for the screen shot on one of the staff zoom meetings.

Staff Key Challenges:
Shift to work-from-home setup

YAKIMA TRIBUTARY ACCESS & HABITAT PROGRAM (YTAHP)

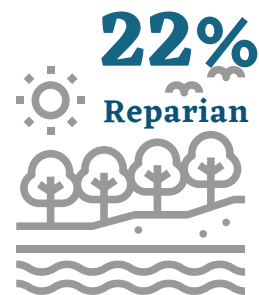
The Yakima Tributary Access & Habitat Program (YTAHP) provides assistance to landowners in restoring critical salmon habitat by implementing projects that protect, restore, and enhance riparian and floodplain habitat currently or historically used by salmon. Learn more at www.washingtonrcd.org/ytahp.

2020 presented many challenges for team members due to Covid-19 restrictions, working remotely, and exercising proper safety precautions when working in field sites. Some projects were delayed, but the YTAHP team shifted funding to other projects.

- YTAHP implemented 19 projects which includes 9 to provide fish passage and 6 to enhance salmonid habitat in Yakima River Tributaries.
- Completed significant planning, permitting and/or engineering for 4 projects.
- The fish passage projects includes:
 - Screening of 3,590 acre ft of water on streams to prevent entrapment of fish
 - Removing barriers to provide additional 1.36 miles of rearing and spawning
 - 6 projects of riparian plantings and maintenance



North Yakima CD WCC crew implementing YTAHP supported riparian enhancement activities on property along Wenas Creek

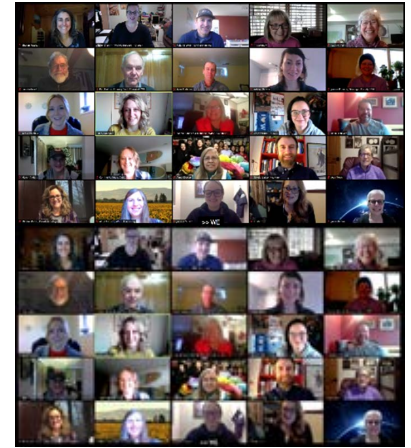


Coleman Creek Project under construction

WASHINGTON FIRE ADAPTED COMMUNITIES LEARNING NETWORK (WAFAC)

Over the past year, the working environment for wildfire preparedness, response, and recovery significantly changed because of COVID-19; however, the needs and demand for support and services did not – and in some cases, they even grew. . In early spring, when the State advised safety precautions to minimize the spread of COVID-19, WRCD’s staff team and WAFAC members responded quickly.

All WAFAC workshops and conferences were immediately canceled, along with all other in-person regularly scheduled meetings, site visits, and field tours. WRCD staff and partners shifted strategies and timelines and began to reimagine how to deliver quality events while following COVID-19 safety guidelines. In response, the Wildfire in the Shrub-Steppe Conference, 2020 WAFAC Annual Workshop, and Introduction to FAC and WAFAC workshops transitioned from in-person events to online events. In addition, WRCD/WAFAC staff hosted weekly online events ranging from informal peer assistance sessions to topic-based presentations to work through challenges or refine ideas to support community fire adaptation in the time of COVID-19.



For more information visit www.fireadaptedwashington.org

Additionally, the everyday work of the Network members was put to the test: how to complete on-the-ground work, collaborate with partners, and engage with stakeholders and residents without meeting in person. That said, the adaptability and innovation of WAFAC members was a source of inspiration and a reminder of their strong commitment to community safety and resilience. Members from across the state collaborated to:

- host combined westside and eastside home, landscape, and smoke preparedness webinars,
- complete virtual wildfire risk assessments,
- organized drive-up outreach events to distribute masks and wildfire preparedness information,
- re-activate local community organizations active in disasters (COAD’s) formed in the wake of the 2014-15 wildfires to coordinate neighborhood-level wildfire and COVID-19 response efforts, and
- extend project timelines to meet the increased demands for vegetation removal and disposal requests because of more residents spending time at home.

The pandemic did allow for more long-term strategic planning efforts with partners. And, as a result, the continuity of connections, learning, and relationships led to more coordinated work and sharing of fire adaptation resources across the state.

59
Educational
Events

4
Wildfire
Protection
Plans

108
Wildfire Risk
Assessments

246
Non-federal
Acres treated



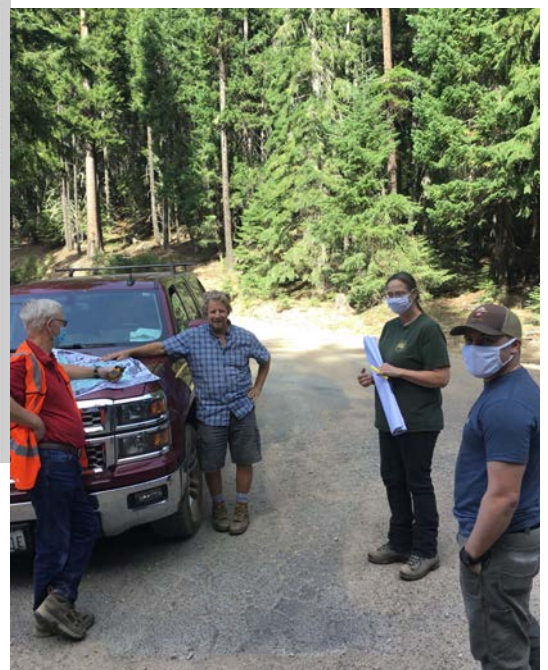
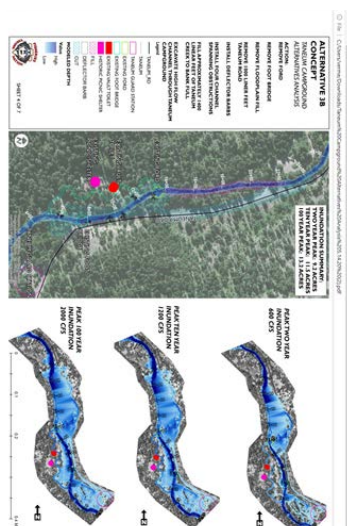
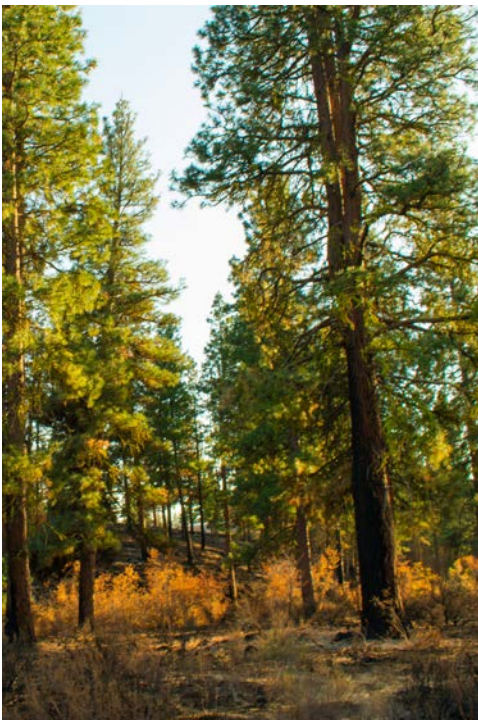
Beginning of 2020, WAFAC members & partners planned and implemented over 15 in-person workshops & events to organize communities around wildfire preparedness efforts in Wenatchee & Sunnyside, WA. Over 50 people signed-up, with 29 Latinx community members.

TAPASH SUSTAINABLE FOREST COLLABORATIVE

WRC&D officially became the fiscal sponsor of the Tapash Sustainable Forest Collaborative. In this role, we provide leadership in the coordination and facilitation, executive team, and diverse stakeholders. A Tapash South Zone Project Manager was hired to facilitate the Little Naches Working Group (LNWG). The LNWG works closely with private, federal and state partners to coordinate and implement forest restoration. Visit www.tapash.org

Some highlights from Tapash this year include:

- **Building Forest Partnerships Grant:** Through the WA DNR grant program, and WRC&D Tapash coordinators moved forward Tapash website edits, a Virtual Tapash Stakeholder Engagement meeting and interactive Tapash Story Map
- **MTRL Workgroup Meeting:** September 2020 MT Work group meeting marked the continual progress of the MTRL project and associated sub-working groups such as the Taneum EA & Campground Work Group, despite a global pandemic-highlighting updates, status of projects, and discussion to coordinate efforts and plan implementation.
- **Transportation Analysis Volunteer Day:** The LNWG successfully completed field data collection volunteer day, that assisted the USFS in the Transportation Analysis of newly acquired USFS lands and future decisions in regards to transportation.



WASHINGTON PRESCRIBED FIRE COUNCIL

One of the Washington Prescribed Fire Council's main programs is the Prescribed Fire Training Exchange (TRES), a two-week training program with participants from across the country that aims to increase expertise, capacity, and the use of prescribed fire on all lands for forest health and community risk. Visit waprescribedfire.org.

After we postponed what was to be a first ever TRES in Northeast Washington in spring of 2019, we started looking at creative ways we could find success this year. Over the past 4 years we have conducted burns around Roslyn, WA on private lands as part of Cascadia TRES in Central Washington (held annually in the fall since 2017). These burns have been a community effort, relying on support from local fire departments in Kittitas County for additional personnel, equipment, and resources to implement these burns.

This TRES looked very different for us in many ways. Planning and coordination happened over the phone and via zoom and we didn't meet in person up until the very day of the burn. On October 8th, 31 participants from 6 local Kittitas County fire departments, mostly volunteers, met in Roslyn to conduct a 22 acre prescribed burn across property lines on private lands and within the Roslyn Urban Forest within Roslyn city limits. This was a locally planned, prepped, and implemented burn and signals a huge step forward for prescribed burning in Washington.



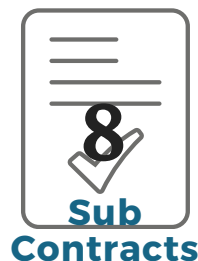
UPPPER WENATCHEE PILOT PROJECT

Since 2017, the WRC&D has helped the North Central Washington Forest Health Collaborative members and the Okanogan Wenatchee National Forest conduct the Chelan Fire Pilot.

The Chelan Fire Pilot provided funding to ad the Lake Wenatchee Fire Adapted Communities group to the WAFAC Learning Network and it funded the first Cascadia TREX.

In addition, it funded the Upper Wenatchee Pilot Project (UWPP)-a contract environmental planning project on approximately 75,000 acres in the Wenatchee River Ranger District. Despite all of the contracting team, the United States Forest Service, the WRC&D, and all members of the NCWFHC moving to work-from-home situations, the project continued toward completion.

So far the project has supported completion of surveys and evaluations across the landscape that will allow the Wenatchee River Ranger District to make decisions for restoring this important landscape to resilient, historic conditions.

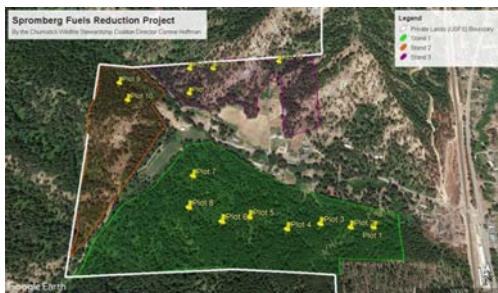


OTHER PROJECTS AND FISCAL SPONSORSHIPS

Chumstick Wildfire Stewardship Coalition (CWSC)

The CWSC operates under the fiscal sponsorship of the Washington Resource Conservation and Development Council (WRCD). CWSC efforts have focused on fuel reduction and monitoring fuel reduction activities in the Chumstick watershed. Over time the Coalition has expanded its engagement to a regional level by exploring biomass utilization, hosting Firewise education workshops, and seizing outreach opportunities to benefit Chelan County. For more information on CWSC, visit www.chumstickcoalition.org

Sprongberg Spotted Owl Habitat Plots



50
acres of fuels
reduction

8
landowners

Plot 1, NSO Circle Before 3 After



Kittitas Fire Adapted Communities Coalition (KFACC)

KFACC a coalition of diverse local and regional partners who have come together to work on a common challenge to coordinate and implement forest & fire resiliency restoration projects on public, and private land in Kittitas County using education, outreach, and increased shared capacity through partnerships. The last in-person full group meeting was held in Cle Elum in mid-February. With the transition to virtual meeting platforms group development was slower than initially planned and expected in 2020, however, the group has made progress in other areas that advance education and community resiliency in Kittitas County. Below are some highlights during a digital reality:

- Coalitions and Collaboratives (COCO) Grant Award: In June/July 2020, a grant for \$36,500 was awarded to Kittitas County Conservation District to implement fuels reduction in partnership with the City of Roslyn and provide capacity and planning funding for community engagement and cross-boundary ownership implementation coordination.
- Subgroup Meetings: Virtual meetings have occurred in November and December to address priority areas of fuels reduction primarily for the protection of private property and infrastructure of the Ronald, Roslyn, Cle Elum and surrounding communities.
- HB 1784: Many KFACC members are part of the HB 1784 technical committee and have participated in the DNR State-led effort.

Northwest Blues Shared Stewardship

The WRC&D supported this coalition of diverse local/regional partners who have come together to work, coordinate and implement forest & fire resiliency restoration on public, private and tribal forestland across the NW Blues Landscape using education, outreach, and increased shared capacity through partnerships. One highlight from the year we would like to share.

Webinar on Prescribed Burning: Several partners come together such as OSU Extension, WSU Extension pulling together a joint webinar that was originally created to lead up to the prescribed burns that were going to taking place on UNF, City of Walla Walla and CTUIR land.